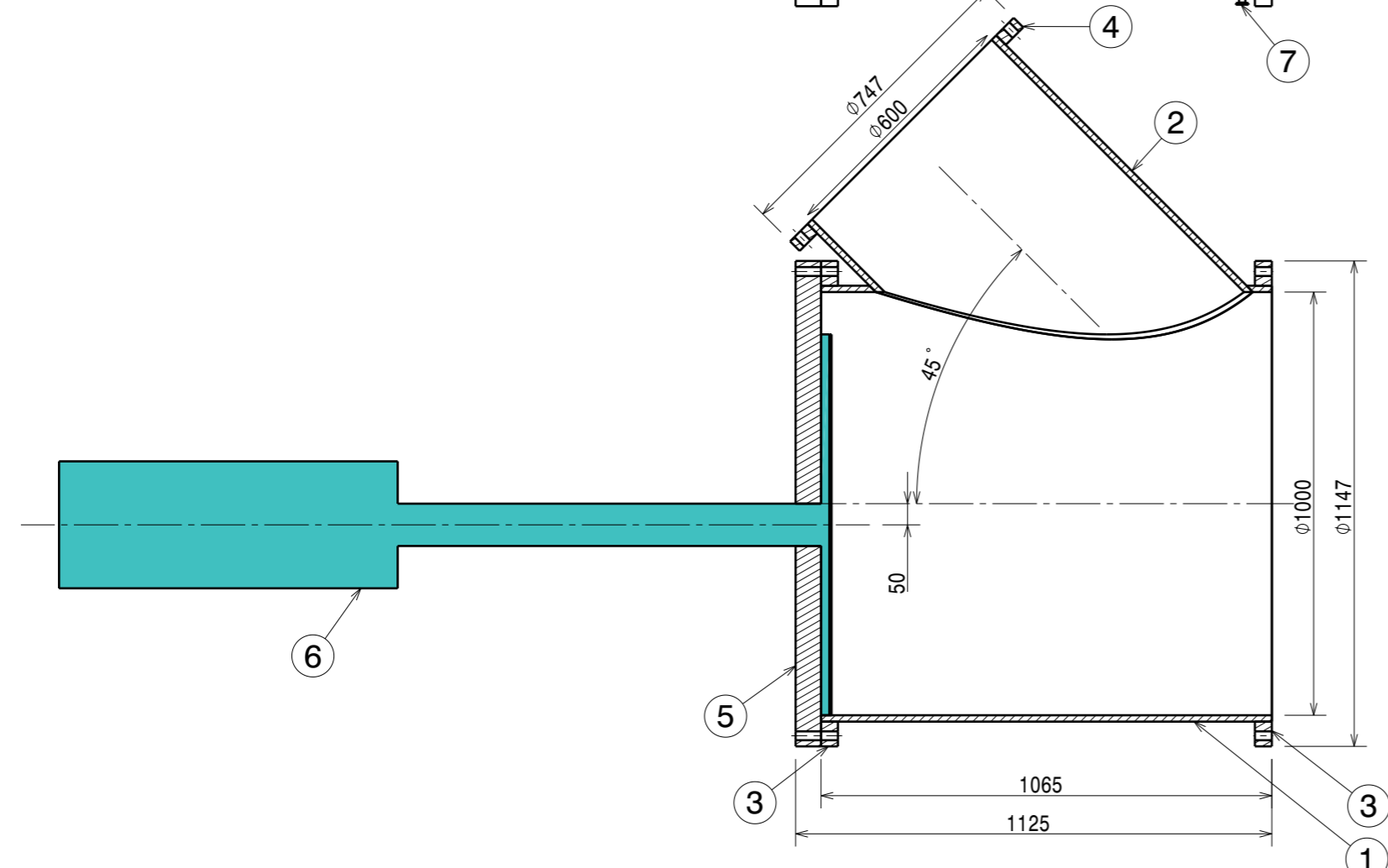


Isometric view

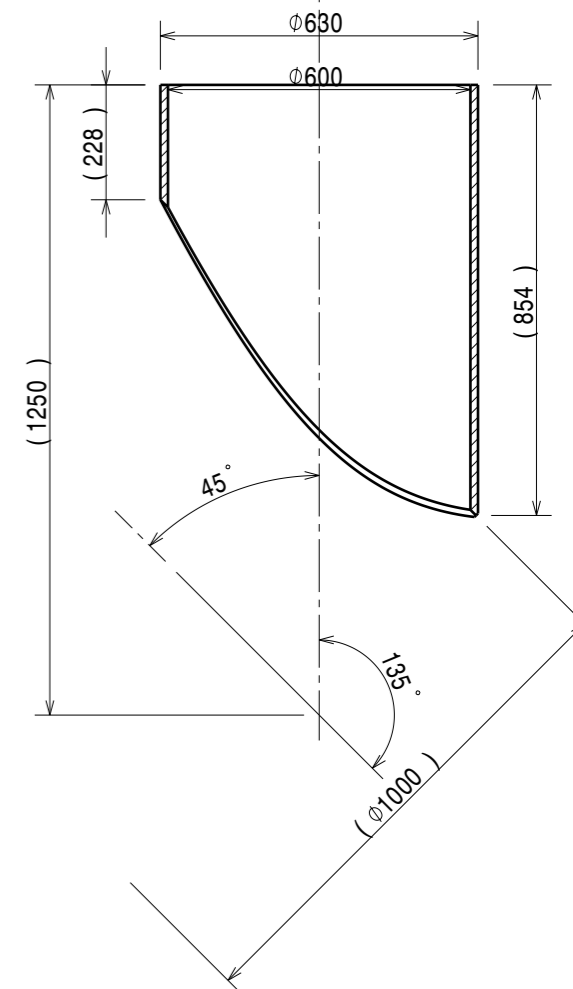
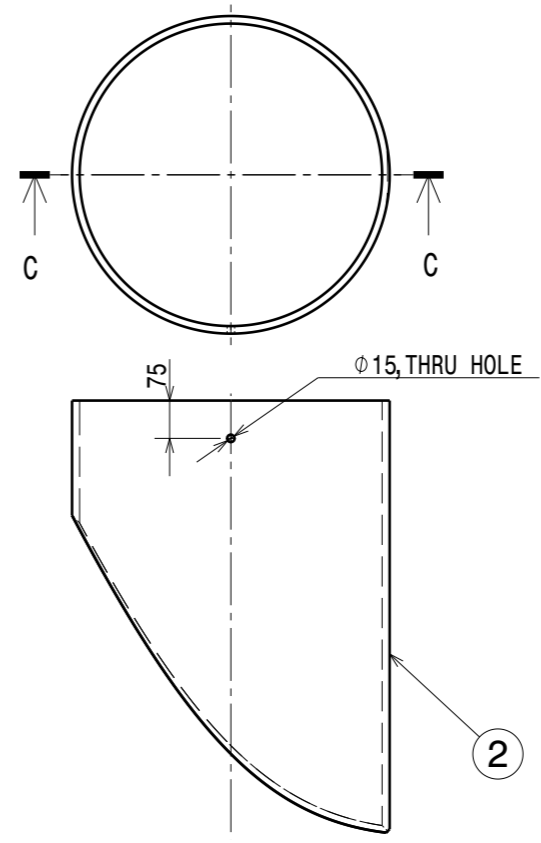
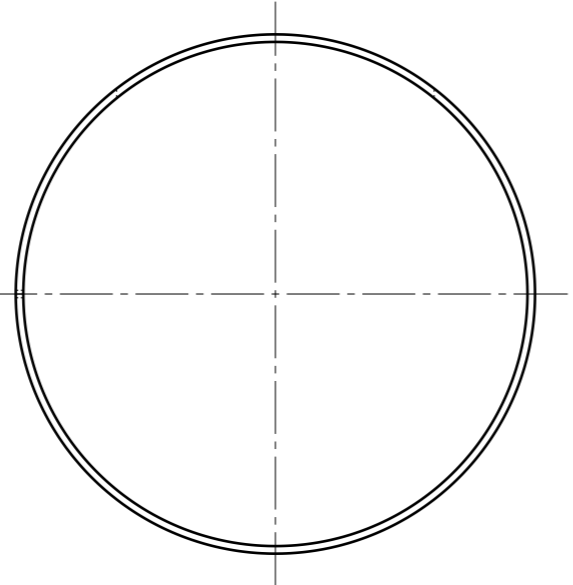
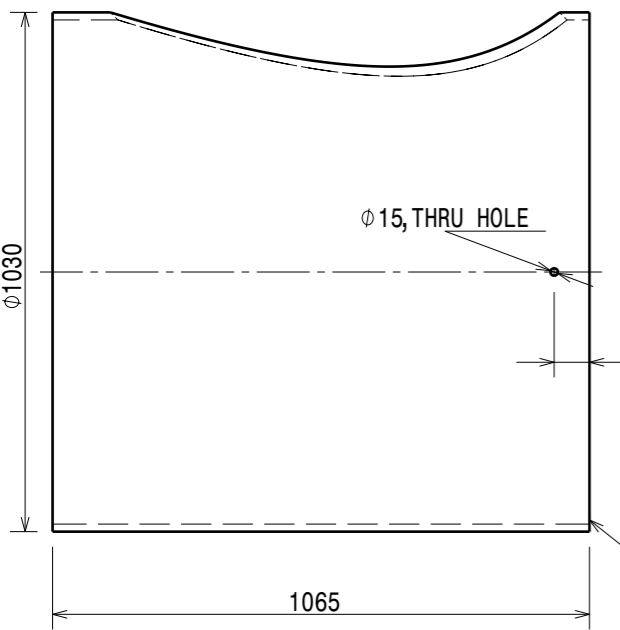
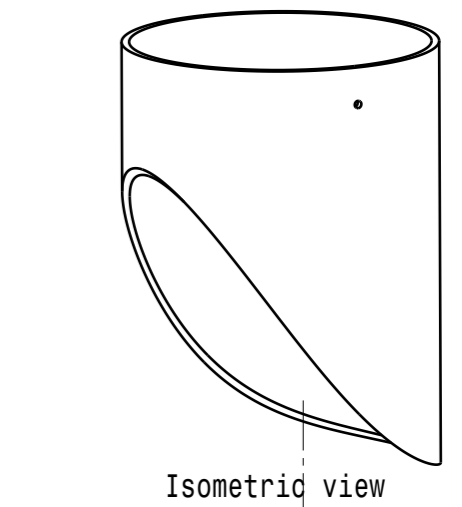
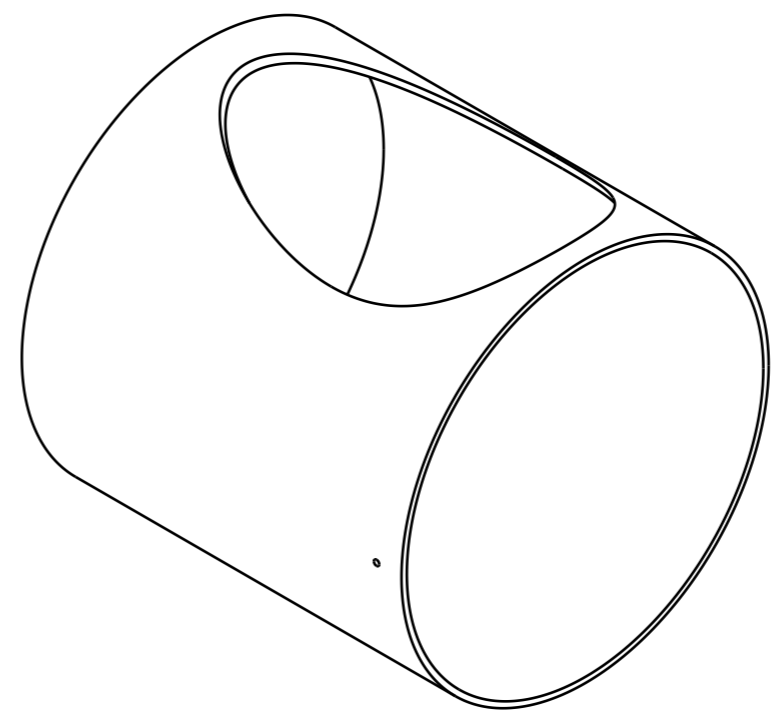
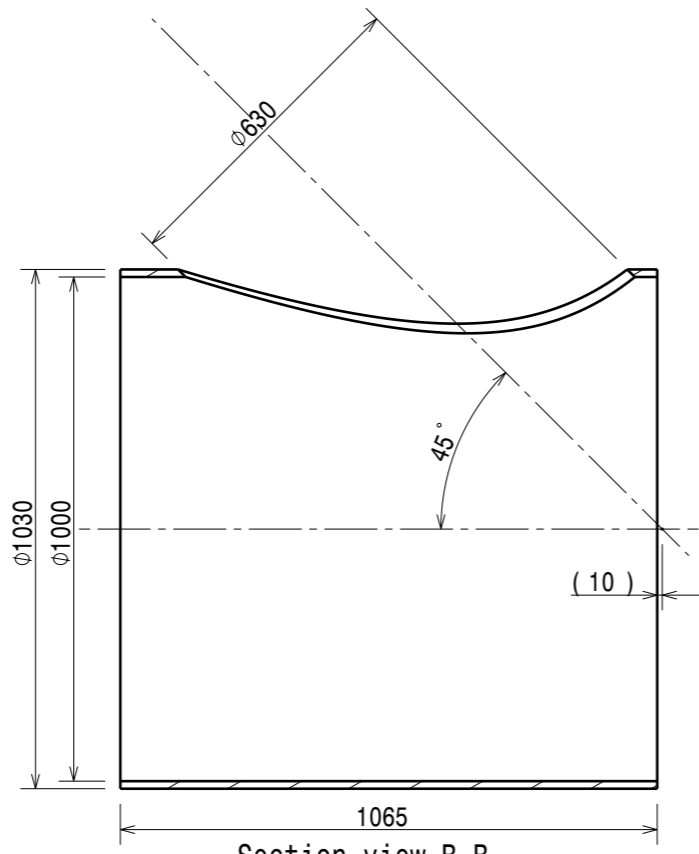
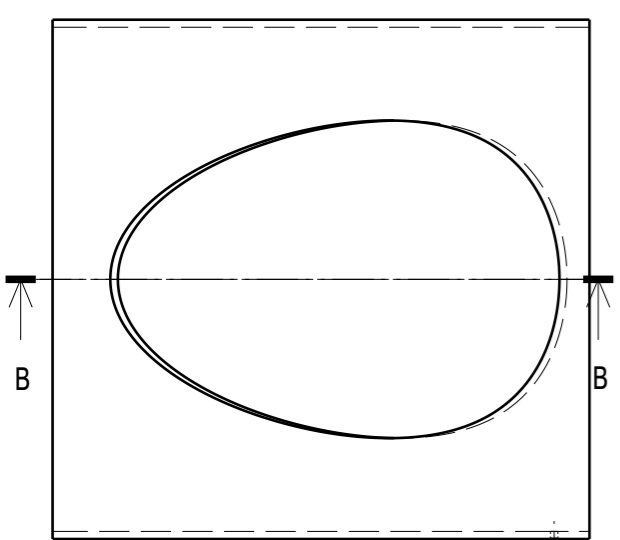


Section view A-A

PART NO: 1-3

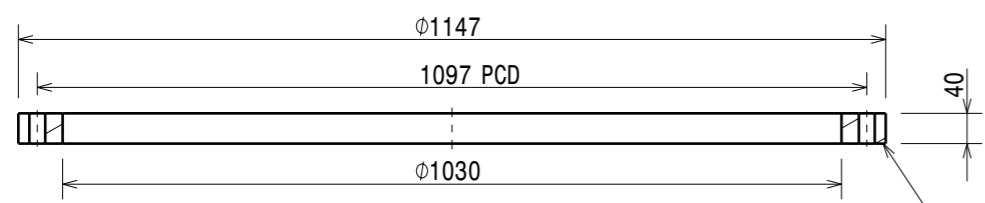
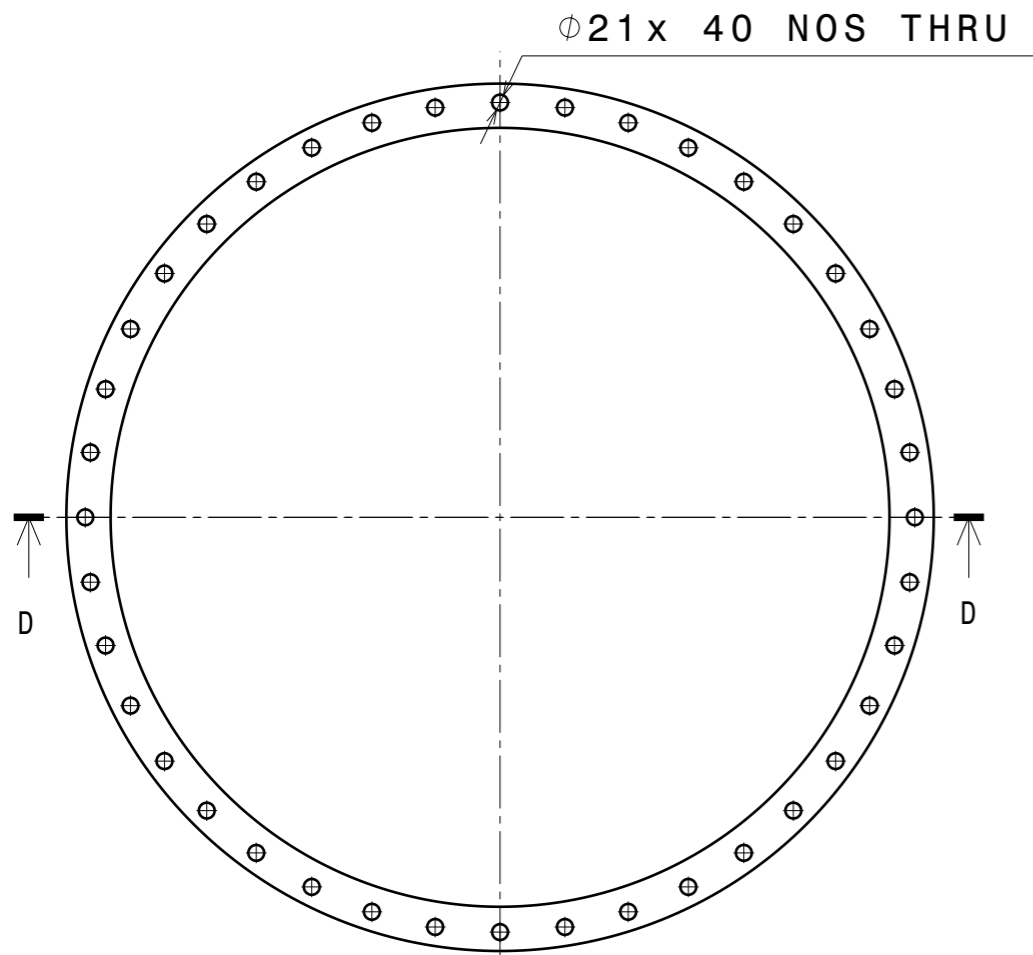
Item No.	Description	Quantity	Material	Remarks
7	PART 7	2	SA-106 GR. B	-
6	PART 6		-	Provided by IPR during instalation.
5	PART 5	1	SA-105	-
4	PART 4	1	SA-105	-
3	PART 3	2	SA-105	-
2	PART 2	1	SA-516 GR. 70	-
1	PART 1	1	SA-516 GR. 70	-

DRG.NO	▽ 8-25	▽▽ 1.6-8	▽▽▽ 0.025-1.6	▽▽▽▽ < 0.025	REVISION COLUMN					ASS'Y GROUP/ DIVISION: APD/IPR	SIZE A3	INSTITUTE FOR PLASMA RESEARCH BHAT, GANDHINAGAR-382 428. INDIA			
CO-ORDINATED BY					REV	ZONE	DESCRIPTION	DATE	REMARKS	APPROVED BY	SCALE	NTS	DATE	TITLE	
COMPONENT MANUFACTURING/FABRICATION AND ASSEMBLY AS PER ASME Y 14.5 AND ISO 2768											THIRD ANGLE PROJECTION	FEEDER CHAMBER 1			
											CHECKED	ATIK MISTRY	REF DRG NO: IPR/APD/20/A3/CBUTF/A	REV 00	
											APPROVED		DRG.NO IPR/APD/20/A3/CBUTF/A/03	SHEET 01 OF 03	

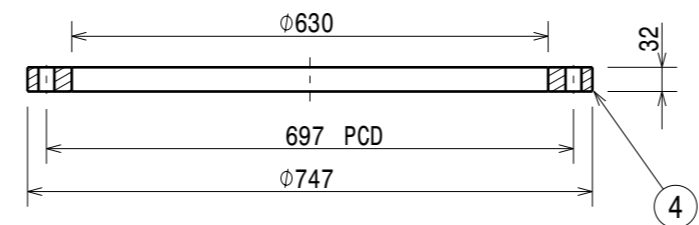
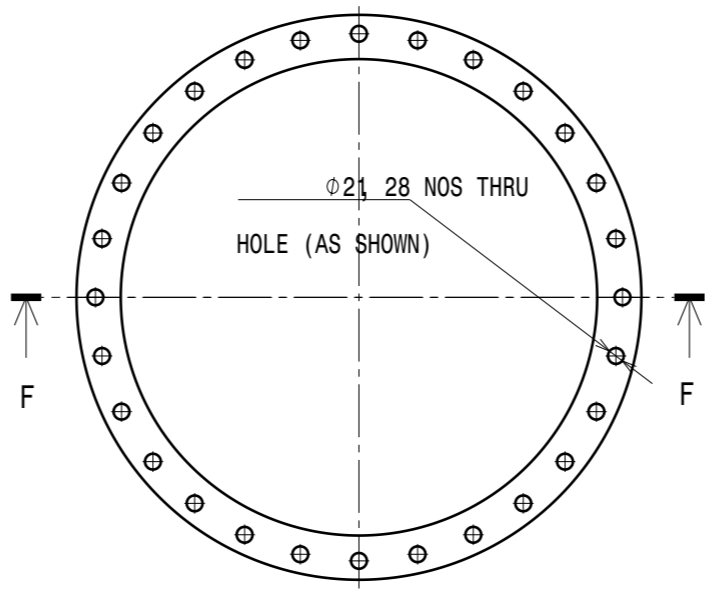


DRG. NO				REVISION COLUMN				ASS'Y GROUP / DIVISION: APD/IPR		SIZE A3
REV	ZONE	DESCRIPTION	DATE	REMARKS	APPROVED BY	SCALE	NTS	DATE	TITLE	
									PART 1,2 <small>THIRD ANGLE PROJECTION</small>	

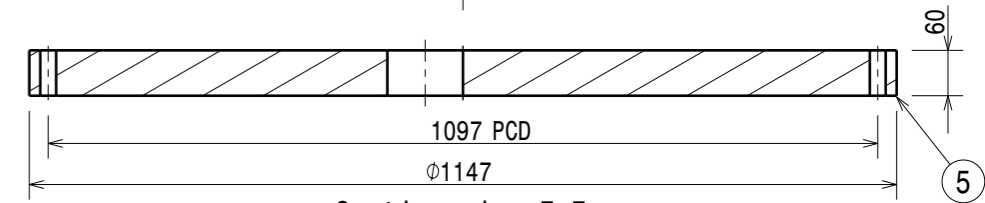
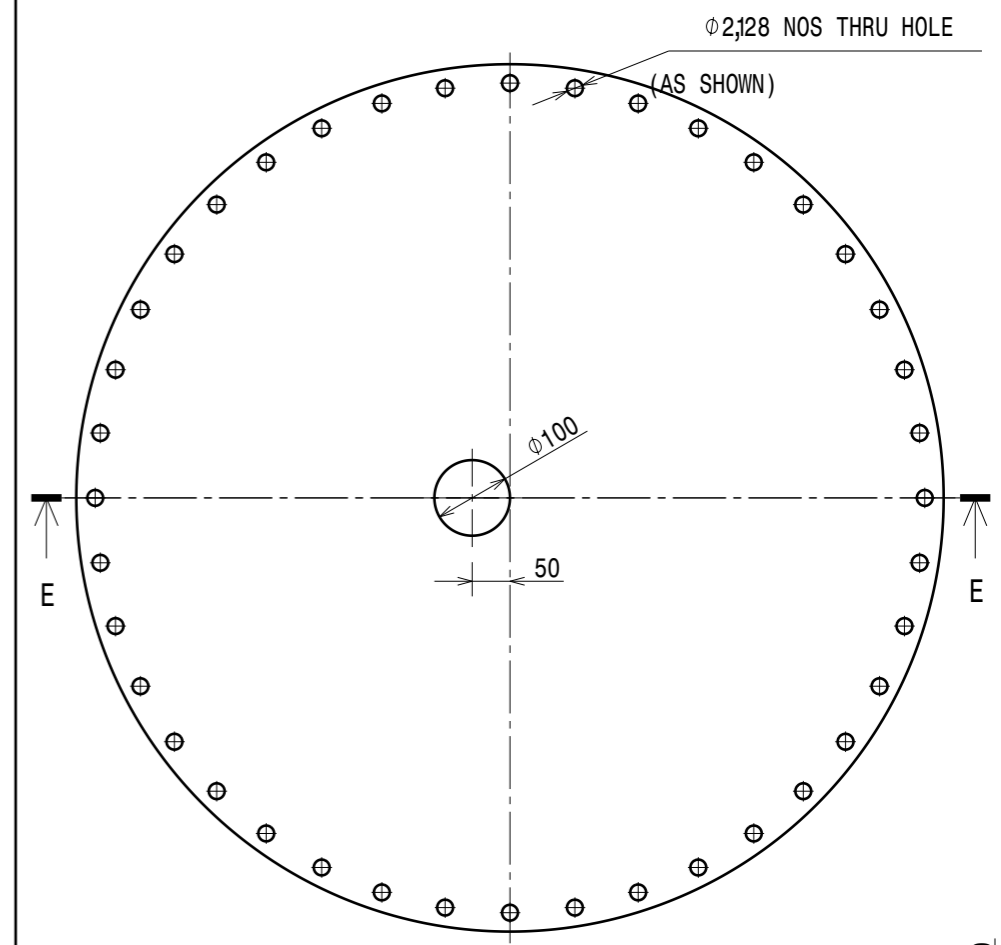
8-25	1.6-8	0.025-1.6	< 0.025	INSTITUTE FOR PLASMA RESEARCH BHAT, GANDHINAGAR-382 428. INDIA		
COMPONENT MANUFACTURING/FABRICATION AND ASSEMBLY AS PER ASME Y 14.5 AND ISO 2768				REF DRG NO-	IPR/APD/20/A3/CBUTF/A	REV 00
				DRG. NO	IPR/APD/20/A3/CBUTF/A/03	SHEET 02 OF 03



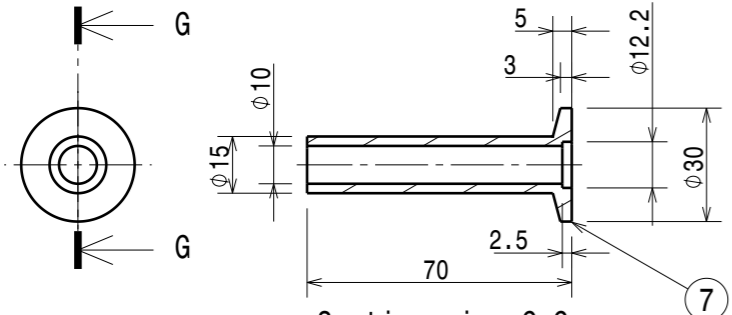
Section view D-D



Section view F-F



Section view E-E



Section view G-G

10 KF COUPLER

COMMON NOTES FOR FLANGE :-
 1. INTEGRAL TYPE FLANGE SHOULD BE FABRICATED.
 2. RAISED FACE THICKNESS OF 2 mm SHALL BE MACHINED IN EXCESS OF FLANGE THICKNESS.

DRG. NO	▽ 8-25	▽ 1.6-8	▽ 0.025-1.6	▽ < 0.025	REVISION COLUMN					ASS'Y GROUP/ DIVISION: APD/IPR	SIZE A3	INSTITUTE FOR PLASMA RESEARCH BHAT, GANDHINAGAR-382 428. INDIA	
CO-ORDINATED BY					REV	ZONE	DESCRIPTION	DATE	REMARKS	APPROVED BY	ALL DIMENSIONS ARE IN 'mm' UNLESS OTHERWISE STATED		SCALE NTS DATE DRAWN SK PATNAIK 20/02/2020 CHECKED ATIK MISTRY APPROVED
COMPONENT MANUFACTURING/FABRICATION AND ASSEMBLY AS PER ASME Y 14.5 AND ISO 2768												REF DRG NO- IPR/APD/20/A3/CBWTf/A	REV 00
											DRG. NO IPR/APD/20/A3/CBWTf/A/03	SHEET 03 OF 03	

H G F E D C B A